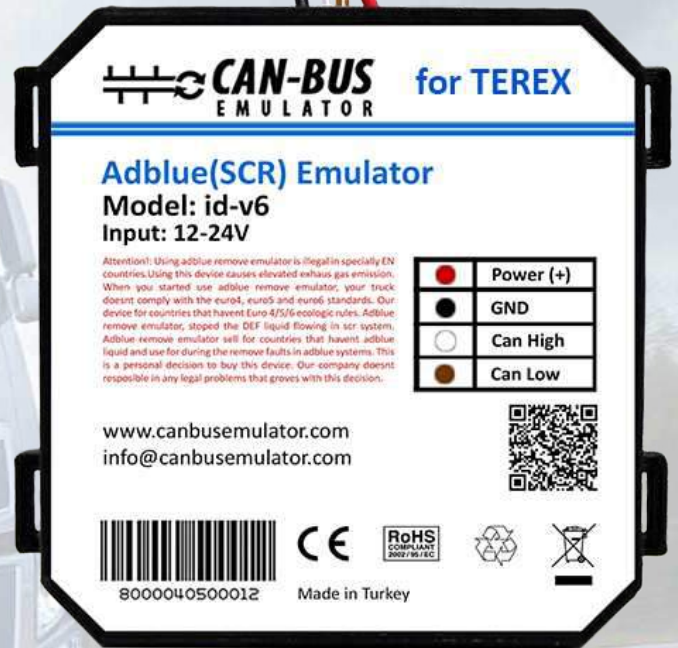




USER MANUAL

ADBLUE EMULATOR TEREX

EURO 6



www.canbusemulator.com/en

+90 530 937 46 36

[erenakarsubasi](https://t.me/erenakarsubasi)

Installation Emulator For TEREX Euro 6

You will see the C4022 socket just below the adblue tank as the C7 socket.
You will unplug the C7 socket and leave it idle.

Emulator assembly:

Emulator Red cable ----- Socket pin 1

Emulator Black cable ----- Socket pin 2

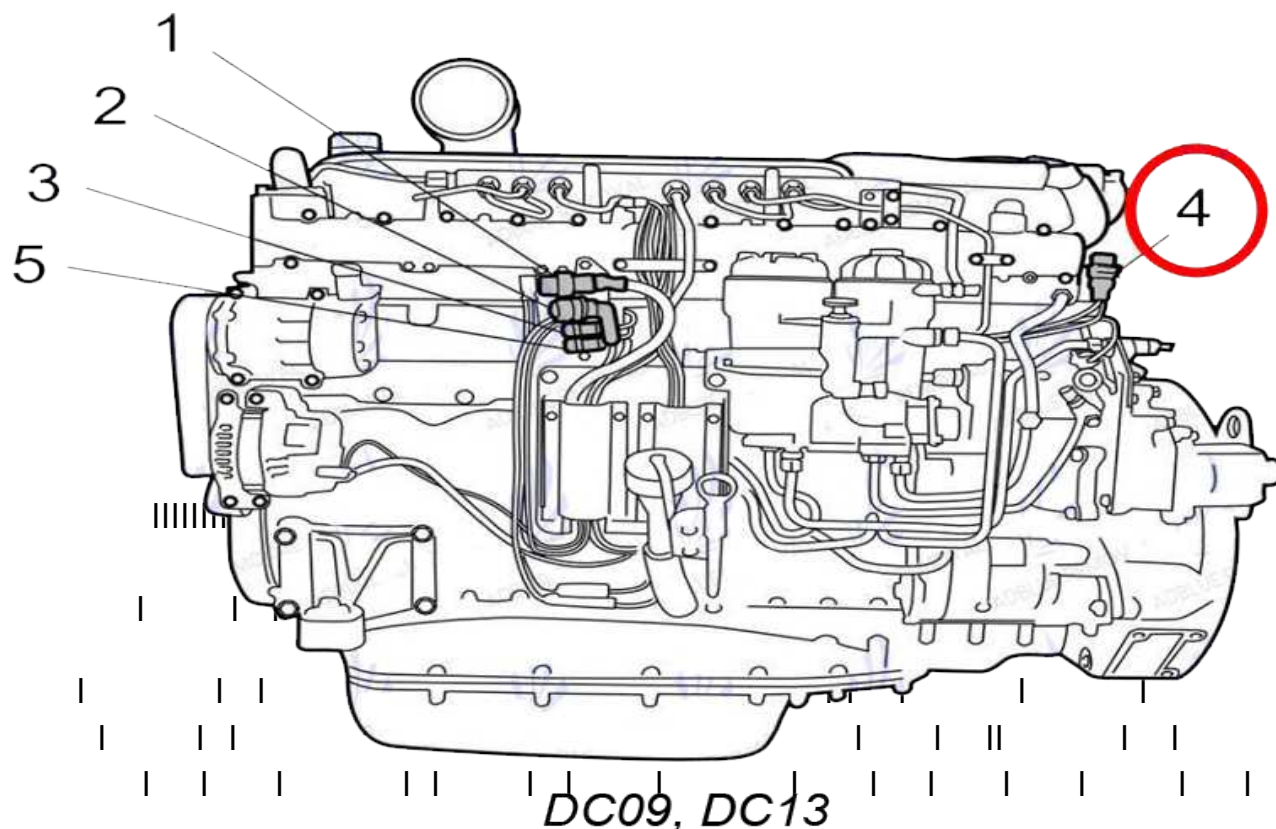
Emulator White cable (CAN H) ----- Socket pin 6

Emulator Brown cable (CAN L) --- Socket pin 7

NOTE: We recommend that you install it inside the cabinet by using extra cables.

Industrial engines

	Connector	Interface	Note
1	C4001	Customer interface to engine control unit.	
2	C4000	Diagnostics.	
3	C4002	Voltage to SCR-systems or EGR systems as well as exhaust brake actuator, if present.	Engines with SCR systems or EGR systems only.
3	C4094	Voltage to ignition coils and throttle actuator at gas mixer.	Gas engines only.
4	C4022	SCR system, cable harness supplied with the engine.	Only engines with SCR systems.
5	C4071	Voltage to variable geometry turbocharger and warning lamps for the SCR system.	Only engines with both SCR and EGR systems.



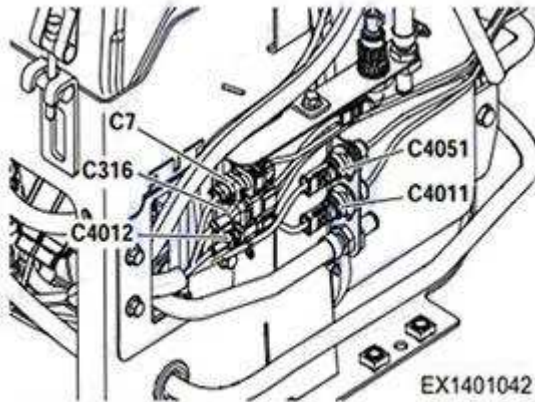


Figure 699

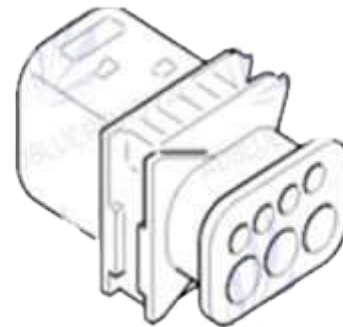


Figure 697

WL1400045

Connection

Pin	Signal	Source/Destination	
1	U30 Voltage to the SCR Control Unit	E67, pin A-3	M1/P3
2	Ground	E67, pin A-4	G4000
3	Not Used		
4	Not Used		
5	U15 Voltage to the SCR Control Unit	E67, pin A-12	C4002, pin 1
6	CAN Signal High	E67, pin A-22	E44, pin B4-7
7	CAN Signal Low	E67, pin A-19	E44, pin B4-8

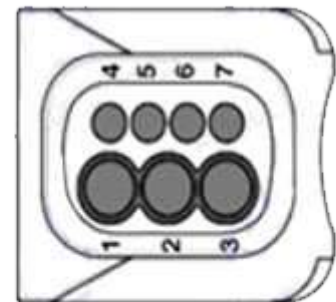
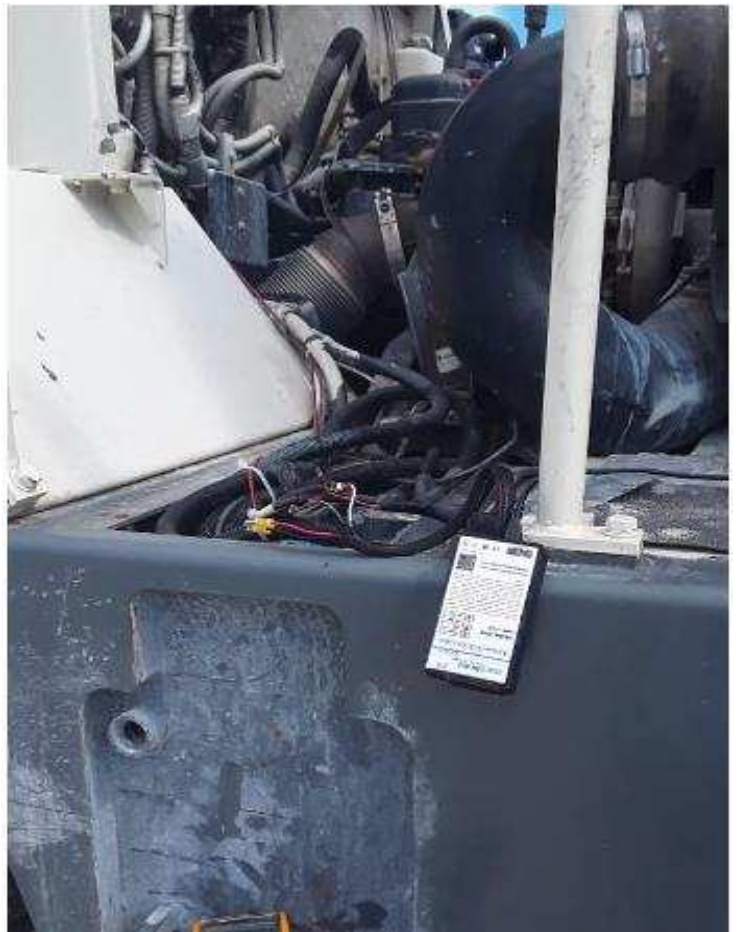


Figure 698

WL1400042

Location



You should definitely cancel the DPF after installing the Adblue Removal Emulator!