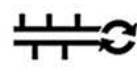


USER MANUAL

for Mercedes 6.2 ACM3

EURO 6.2

**CAN-BUS**
EMULATOR

FOR MERCEDES

Adblue(SCR) Emulator

Model: id-v6.2**Input: 12-24V**

Attention!: Using adblue remove emulator is illegal in specially EN countries. Using this device causes elevated exhaust gas emission. When you started use adblue remove emulator, your truck doesn't comply with the euro4, euro5 and euro6 standards. Our device for countries that haven't Euro-4/5/6 ecologic rules. Adblue remove emulator, stopped the DEF liquid flowing in scr system. Adblue remove emulator sell for countries that haven't adblue liquid and use for during the remove faults in adblue systems. This is a personal decision to buy this device. Our company doesn't responsible in any legal problems that groves with this decision.

	Power (+)
	GND
	Can High
	Can Low

www.canbusemulator.com
info@canbusemulator.com



8000040500012



Made in Turkey

www.canbusemulator.com/en[+90 530 937 46 36](https://wa.me/905309374636)[erenakarsubasi](https://t.me/erenakarsubasi)

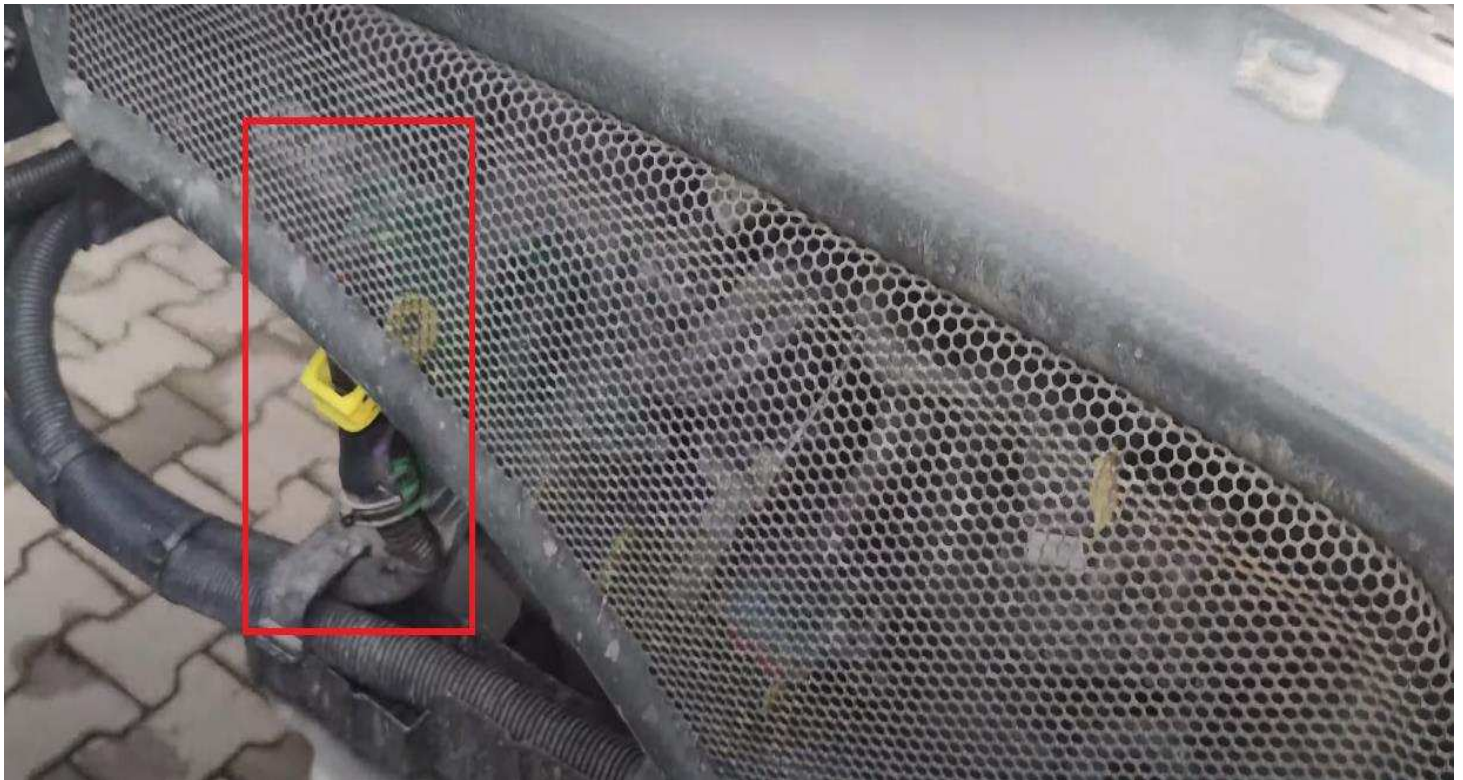
Installation Emulator For MERCEDES Euro 6.2 ACM3

- 1-It is recommended to clean the vehicle Exhaust before the procedure.
- 2-Remove the green socket in the ACM3 socket. (picture1)
- 3-CAN cables will be connected from the star point specified below. (picture2)
- 4-Emulator Brown cable will be connected to the vehicle's White cable. (CAN LOW)
- 5-Emulator's White cable will be connected to the vehicle's Blue cable. (CAN HIGH)
- 6-Emulator's Black cable will be connected to the vehicle's Blue / Brown cable
- 7-Emulator's Red cable will be connected to the vehicle's Green / Black after ignition cable. (picture3)

NOTE: You don't remove any fuse. !!!

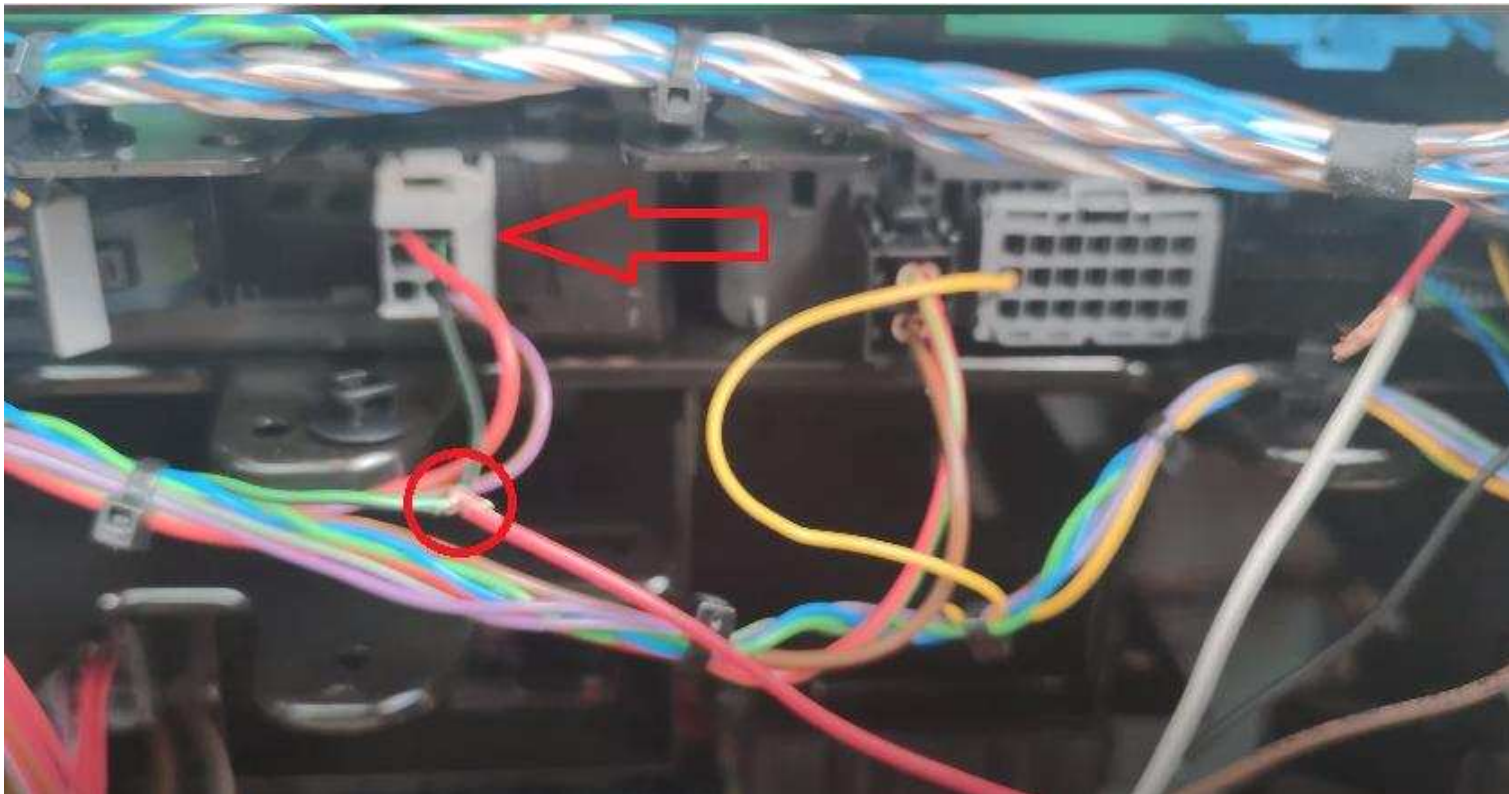
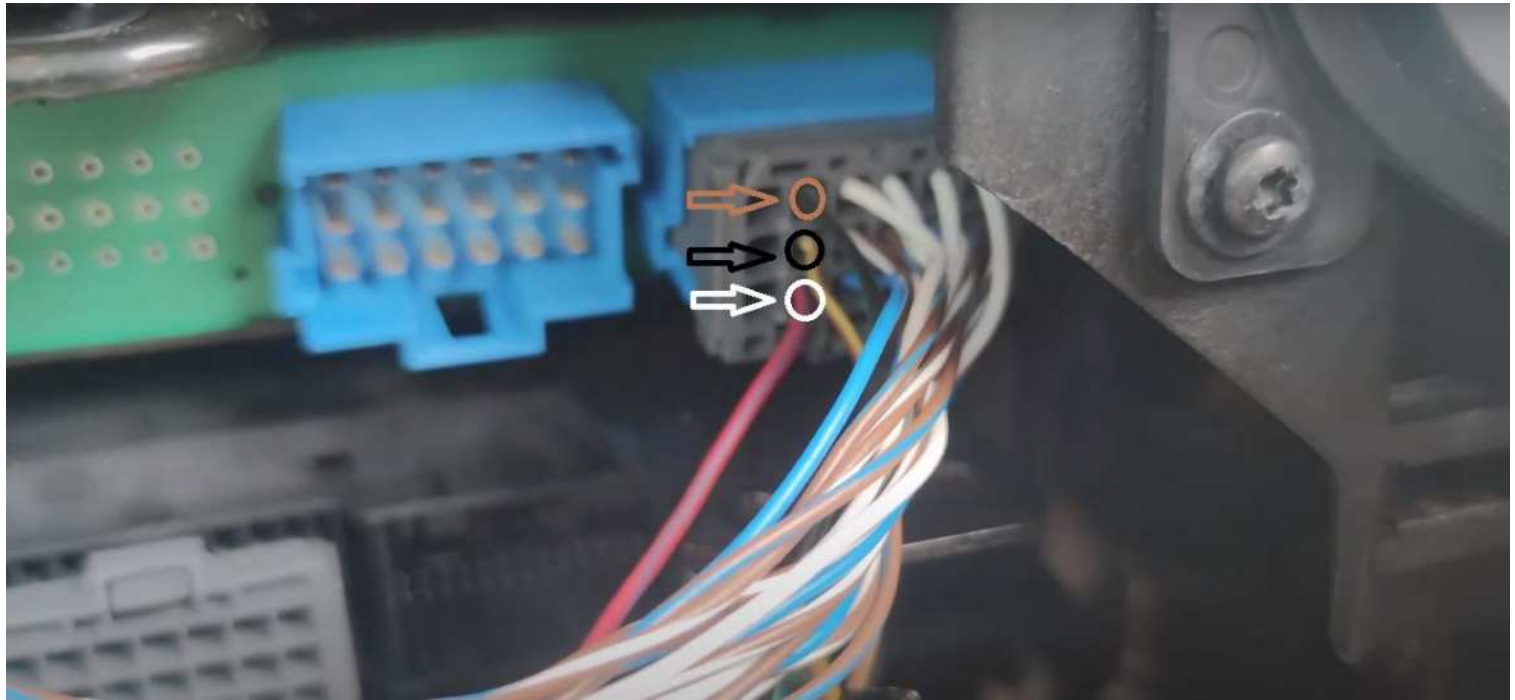
After the procedure, you need to remove DPF and delete Fault. "Mercedes DTC Eraser Euro 6" will help you to clear the fault.

Video link: <https://youtu.be/JKr0rEguGgQ>



You should definitely cancel the DPF after installing the Adblue Removal Emulator!

Installation Emulator For MERCEDES Euro 6.2 ACM3



You should definitely cancel the DPF after installing the Adblue Removal Emulator!

Installation Emulator For MERCEDES Euro 6.2 ACM3



You should definitely cancel the DPF after installing the Adblue Removal Emulator!