



USER MANUAL

LIUGONG YUCHAI ENGINE ADBLUE EMULATOR INSTALLATION

EURO 6

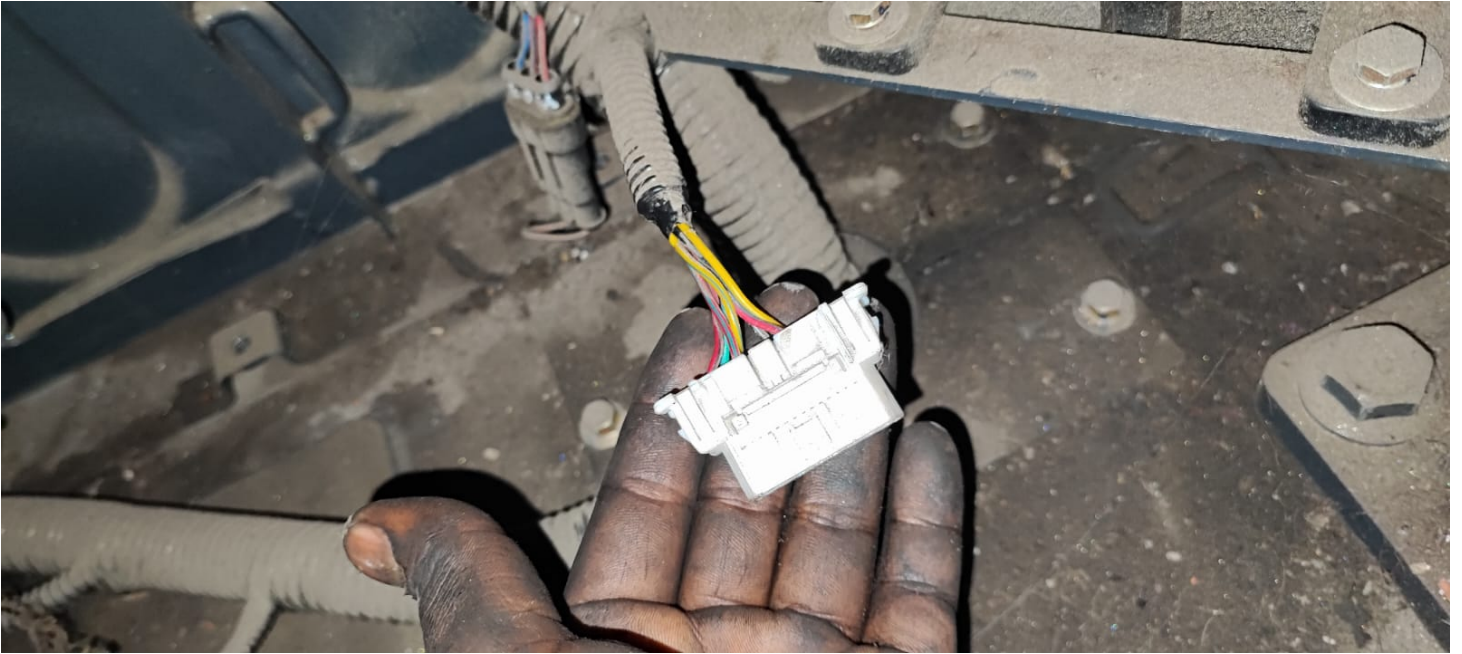


 www.canbusemulator.com/en

 +90 530 937 46 36

 [erenakarsubasi](https://t.me/erenakarsubasi)

LIUGONG YUCHAI ENGINE ADBLUE EMULATOR INSTALLATION



Wire Color	Pin to connect
● Black Wire	Pin4 - Pin5
● Red Wire	Pin16
● Yellow Wire	Pin6
● Green Wire	Pin14

Sockets to be removed:

- 2 pieces NOx Sensor
- 1 piece Adblue Level-Temperature-Quality Sensor
- 1 piece Adblue Pump Socket

856H^{MAX} SPECIFICATIONS

OPERATING WEIGHT 18350 Kg

ENGINE

YuChai 6 cylinder, CRDi, Turbocharged, Intercooled Engine Designed and Developed for LiuGong Wheel Loaders.

Manufacturer Yuchai

Model YCK09230-B460

Emmission Regulation CEV Stage IV

Gross Power 225 HP (168 kW) @ 2000 rpm

Peak Torque 1200 N-m @ 1300 rpm

Displacement 9.41 L

Aspiration Turbocharged, Intercooled

Number of Cylinders 6

BRAKE SYSTEM

Service Brake

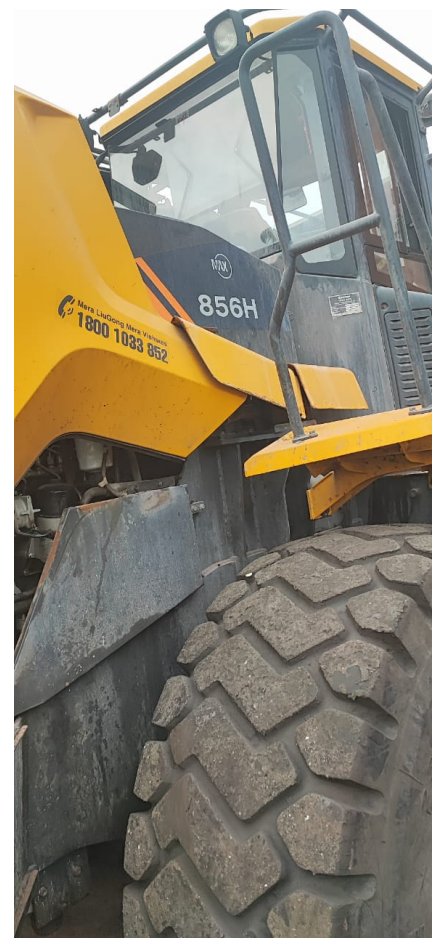
Parking Brake

Secondary

HYDRAULIC SYSTEM

Efficient and powerful pumps for generating hydraulic pressure

Main Pump



NOx 1



NOx 2



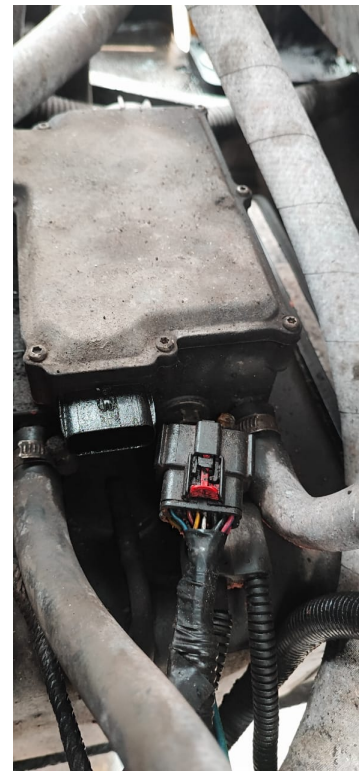
Adblue Pump and
Adblue Level
Socket



Engine ECU Socket



Adblue Pump



Adblue Pump Socket

No fuses will be removed.