


# KULLANIM KILAVUZU

## DOOSAN DPF EMÜLATÖR KURULUMU

**EURO 6**



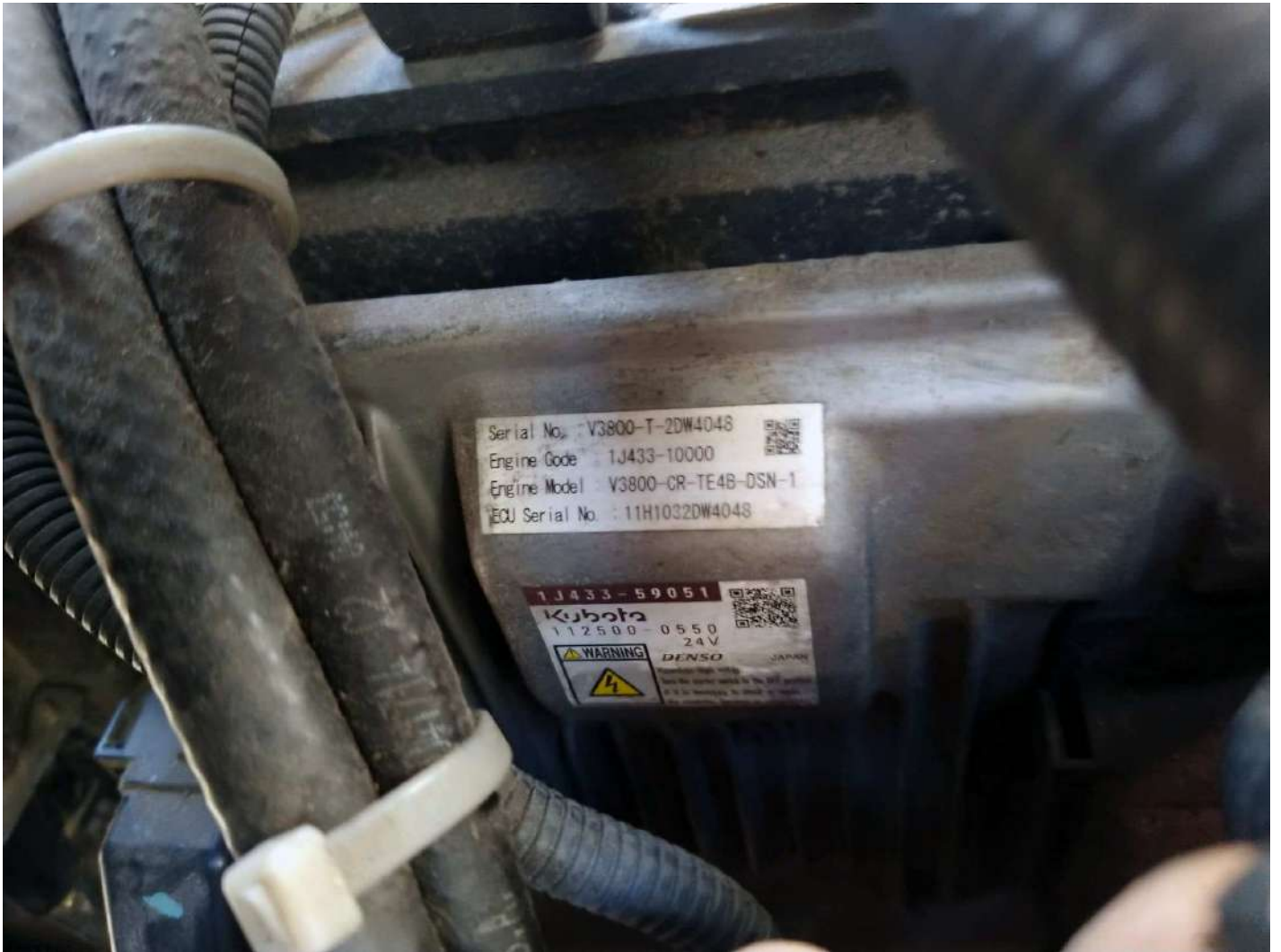
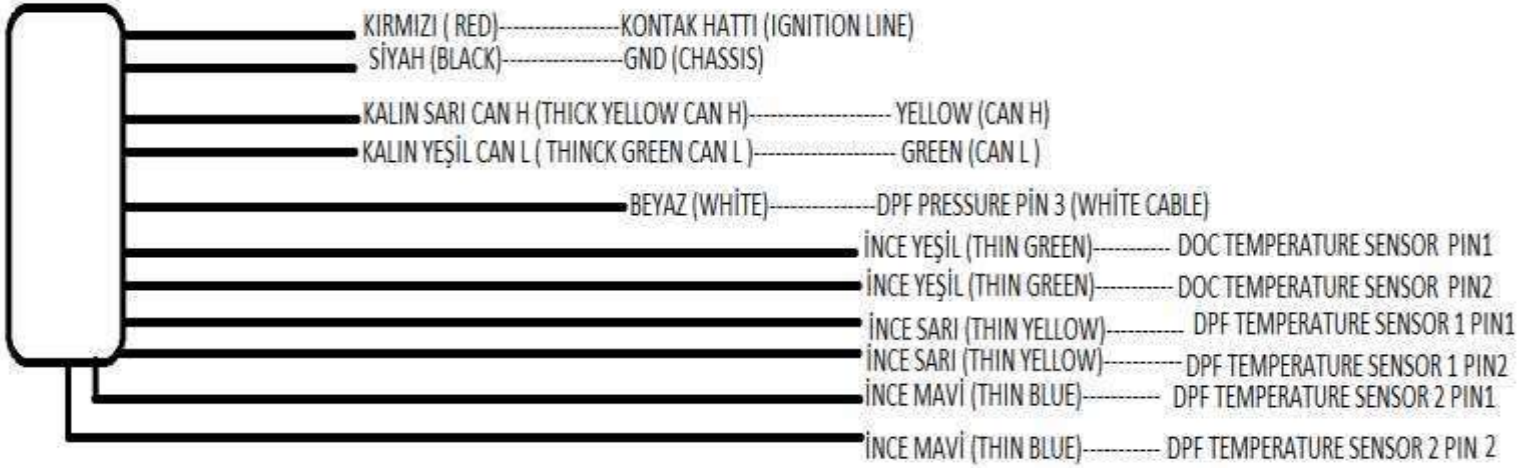
 [www.canbusemulator.com](http://www.canbusemulator.com)

 +90 530 937 46 36

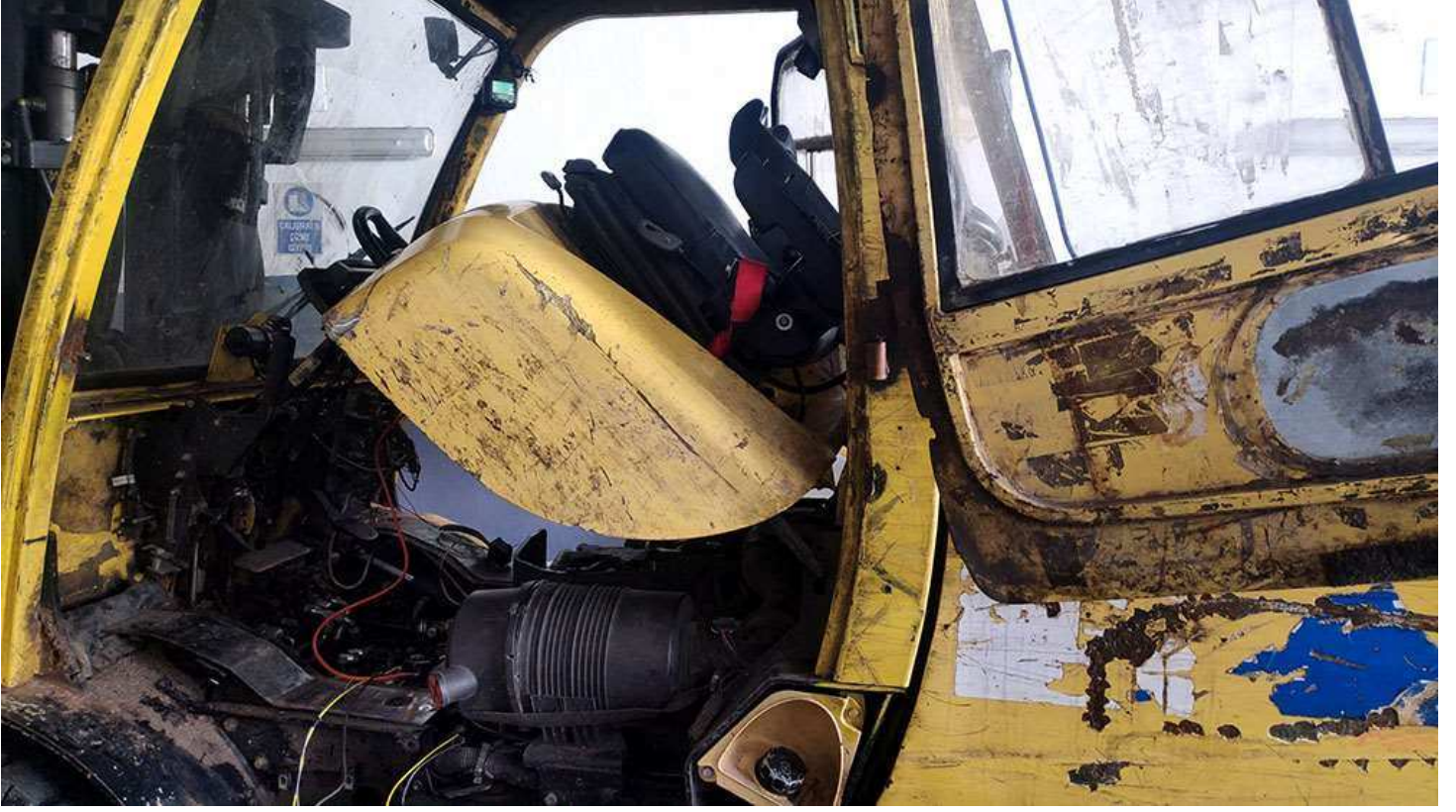
 [erenakarsubasi](https://t.me/erenakarsubasi)

# DOOSAN DPF EMÜLATÖR MONTAJI

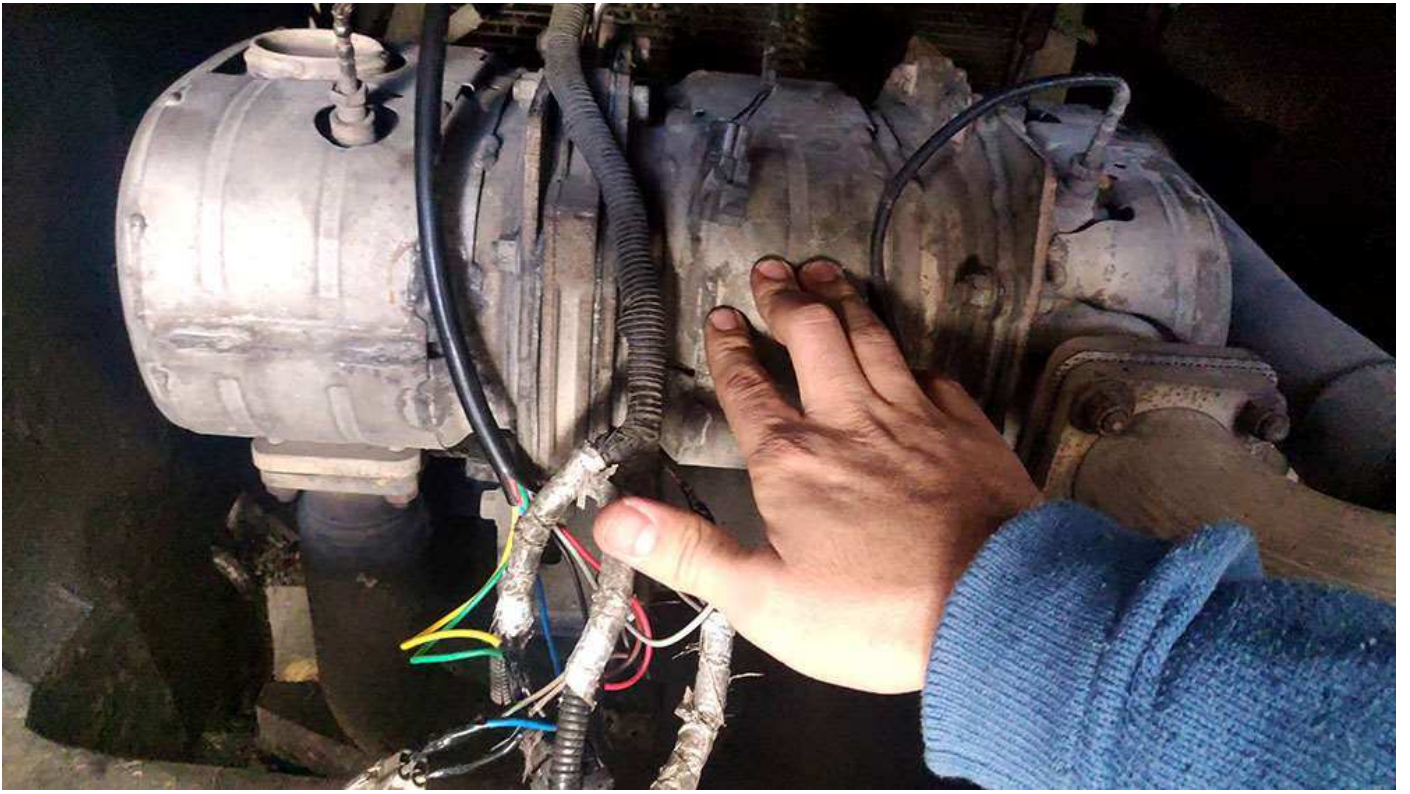
## DPF emulatur



**DPF emülatör montajını yukarıdaki bağlantı şemasını kullanarak yapabilirsiniz. Montaj esnasında ekstra kablo kullanarak emülatörü uygun bölgeye sabitleyebilirsiniz.**



**Resimde görülen Yeşil – Sarı hat ekstra kablo CAN hatlarıdır.**



**Sıcaklıklar ve fark basınç sensörü için ekstra kablo kullanılmıştır.**

PC Service Tool  
File Diagnostics Truck Configuration Programming Help

**HYSTER**

Status	Parameter	Value	Target	Unit
<input checked="" type="radio"/>	Accelerator Pedal %	0	0 - 3	%
<input checked="" type="radio"/>	Park Brake Status	Park Brake Set	Park Brake Set	
<input checked="" type="radio"/>	Neutral Status	Neutral	Neutral	
<input checked="" type="radio"/>	Engine Coolant Temperature	14	70 - 90	°C
<input type="radio"/>	DPF Soot Load %	0	-	%
<input type="radio"/>	Aftertreatment DOC Intake Gas Temp	89	-	°C
<input type="radio"/>	Aftertreatment DPF Intake Gas Temp	90	-	°C
<input type="radio"/>	Aftertreatment DPF Outlet Gas Temp	90	-	°C
<input type="radio"/>	Aftertreatment DPF Differential Pressure	0.00	-	kPa
<input type="radio"/>	DPF Status	Regen Not Needed	-	
<input type="radio"/>	DPF Active Regen Status	Not Active	-	

**DPF Emulator montajından sonra DPF'i sökmeniz gerekmektedir.**