




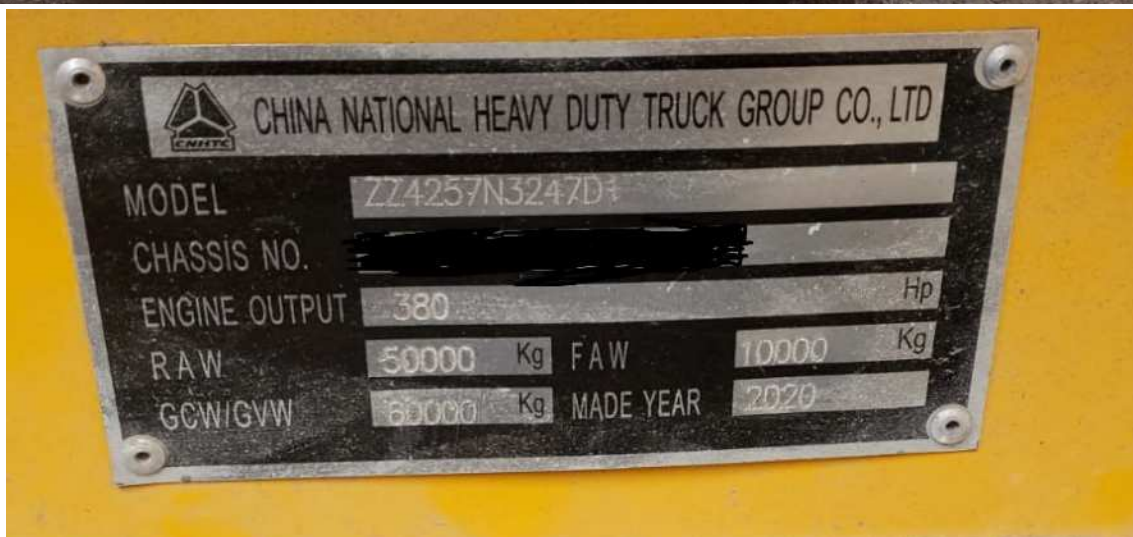
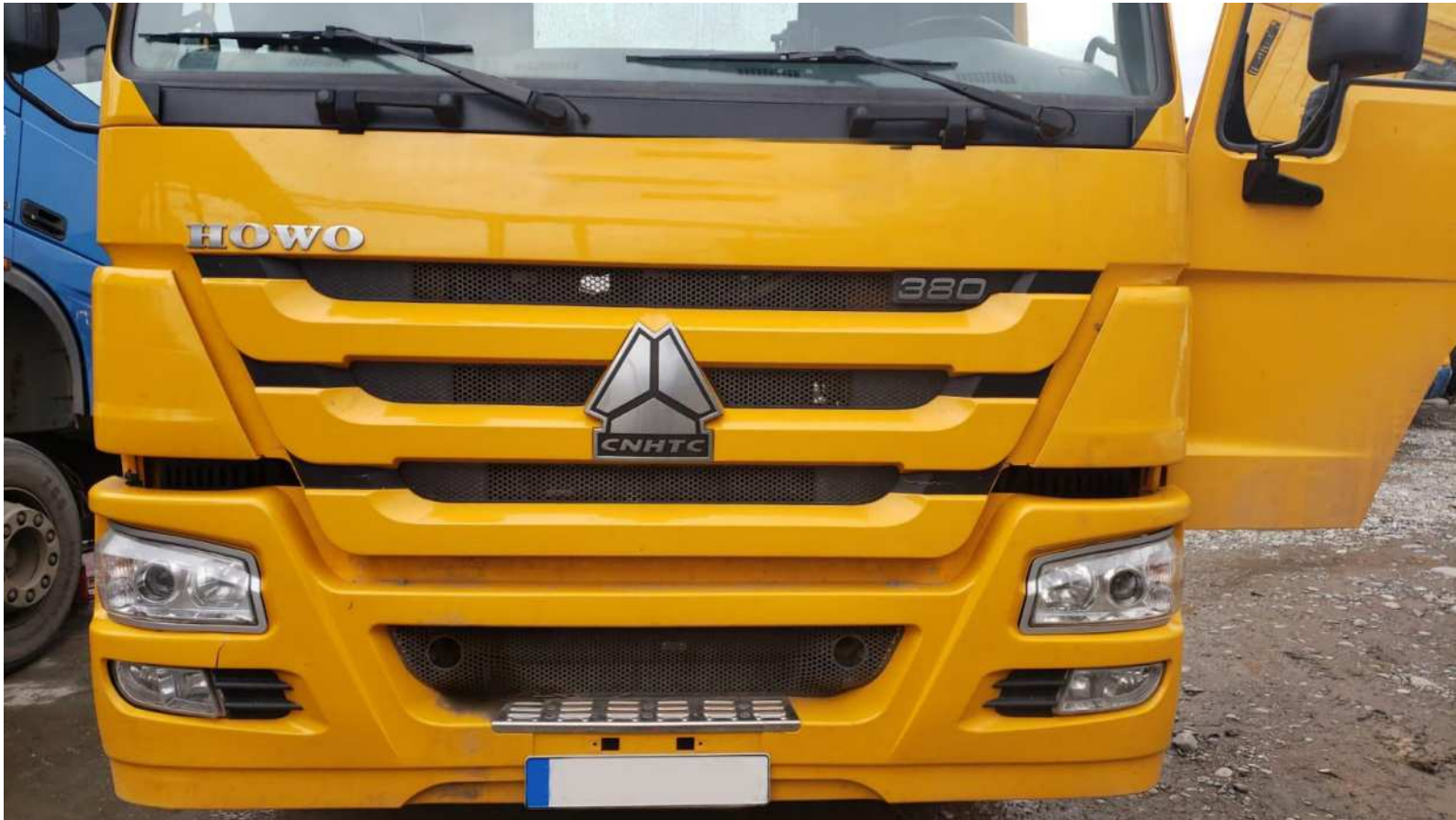
KULLANIM KILAVUZU

SINOTRUK ADBLUE EMULATOR KURULUMU

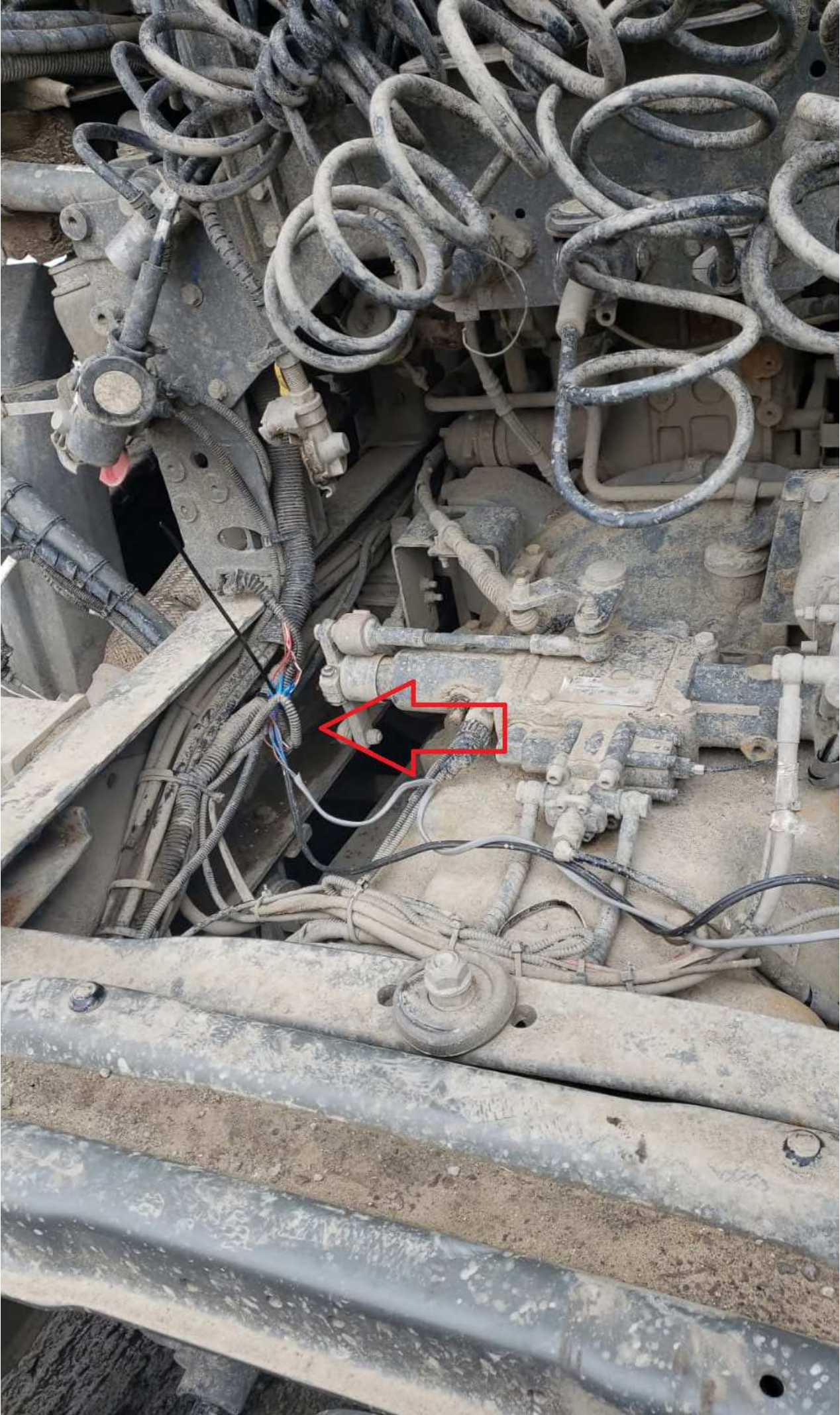
 www.canbusemulator.com

 +90 530 937 46 36

 erenakarsubasi



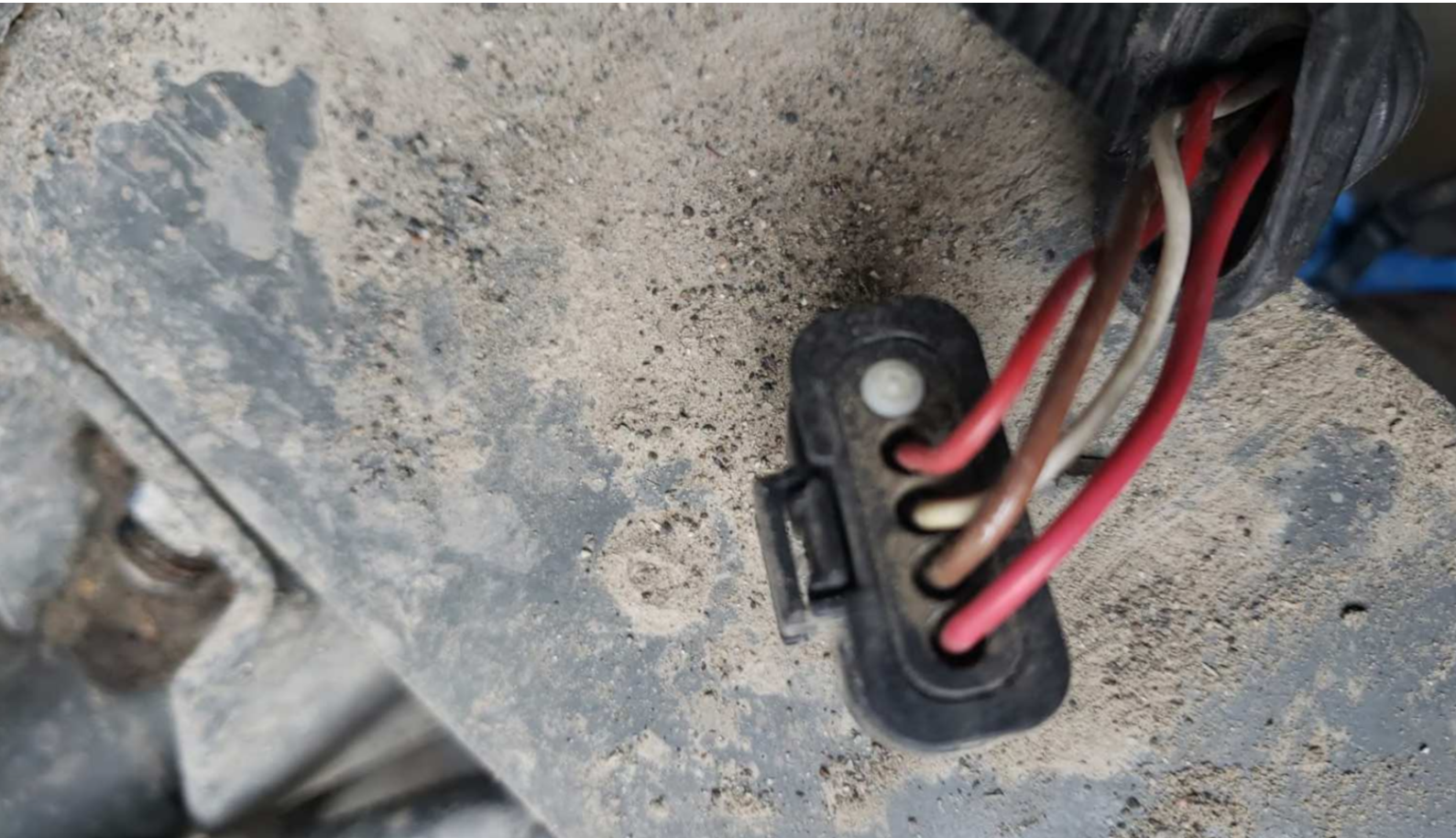
Nox Soketinin yeri:



Nox beyni :



Nox Soketi



SINOTRUK ADBLUE EMULATOR KURULUMU

Emulator Baęlantı Tablosu:

Emulator	Nox Sensör
Kırmızı Kablo (güç +15)	Nox pin 1
Siyah Kablo (GND -)	Nox pin 2
Yeşil Kablo (CAN H)	Nox pin 3
Sarı Kablo (CAN L)	Nox pin 4

Kurulumdan Sonra Dcu soketini çekmeniz gerekiyor. Dcu soketinin konumu aşağıda belirtilmiştir.

Dcu Soketinin Konumu



Dcu Soketinin Konumu



Dcu Soketi



Dcu Soketi

