



# USER MANUAL

for Mitsubishi Fuso Euro 6



 [www.canbusemulator.com/en](http://www.canbusemulator.com/en)

 +90 530 937 46 36

 [erenakarsubasi](https://t.me/erenakarsubasi)

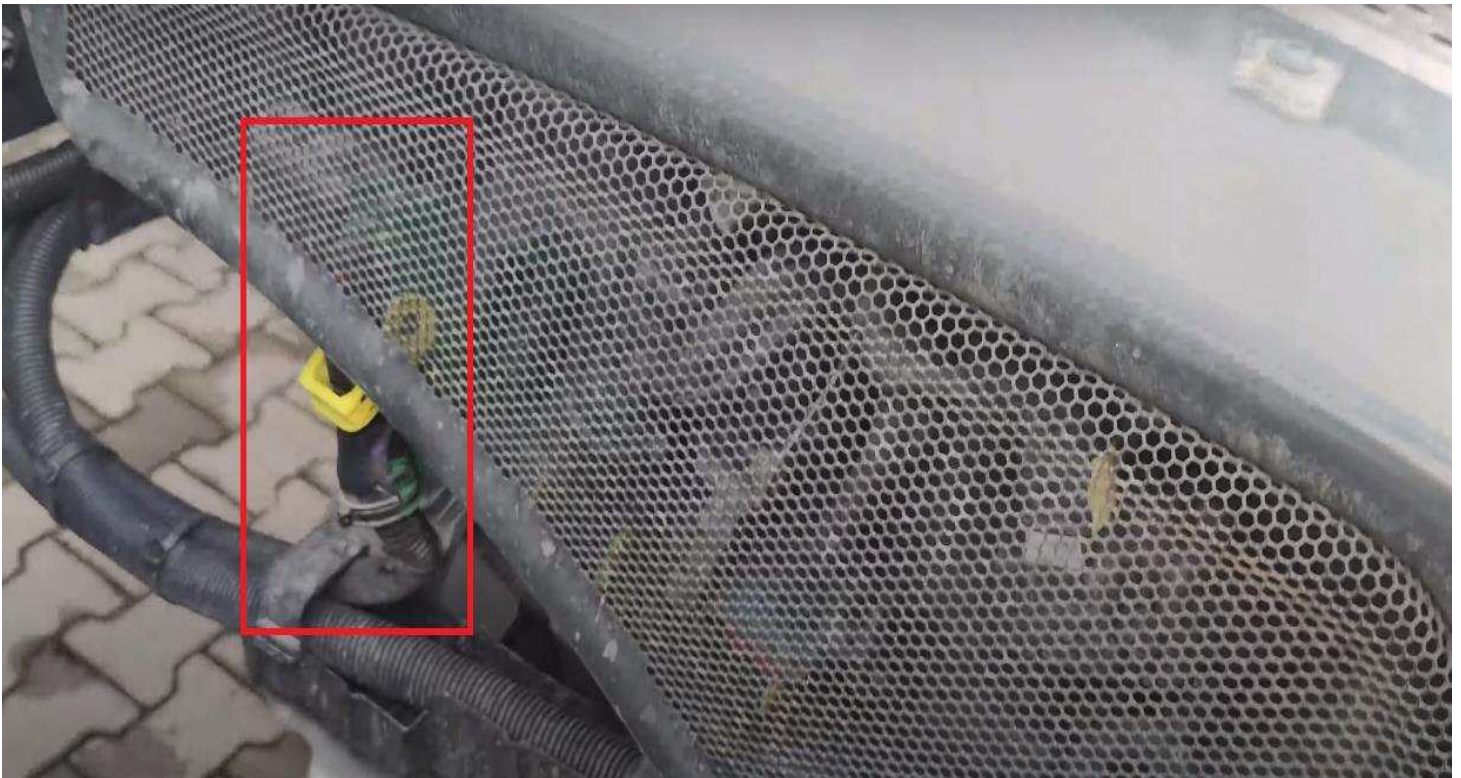
# Installation Emulator For Mitsubishi Fuso Euro 6

- 1-It is recommended to clean the vehicle Exhaust before the procedure.
- 2-Remove the green socket in the ACM3 socket. (picture1)
- 3-CAN cables will be connected from the star point specified below. (picture2)
- 4-Emulator Brown cable will be connected to the vehicle's White cable. (CAN LOW)
- 5-Emulator's White cable will be connected to the vehicle's Blue cable. (CAN HIGH)
- 6-Emulator's Black cable will be connected to the vehicle's Blue / Brown cable
- 7-Emulator's Red cable will be connected to the vehicle's Green / Black after ignition cable. (picture3)

**NOTE:** You don't remove any fuse. !!!

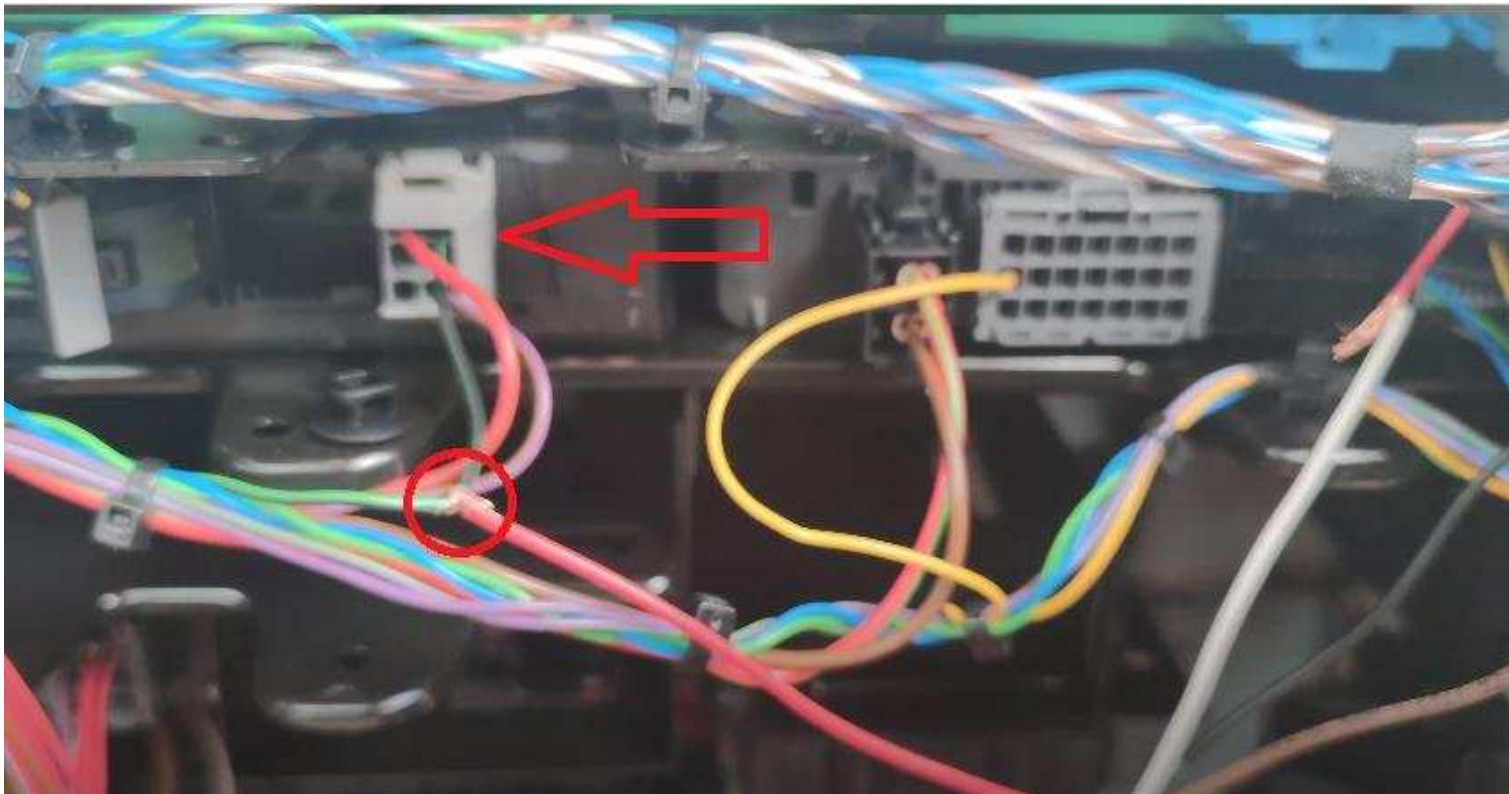
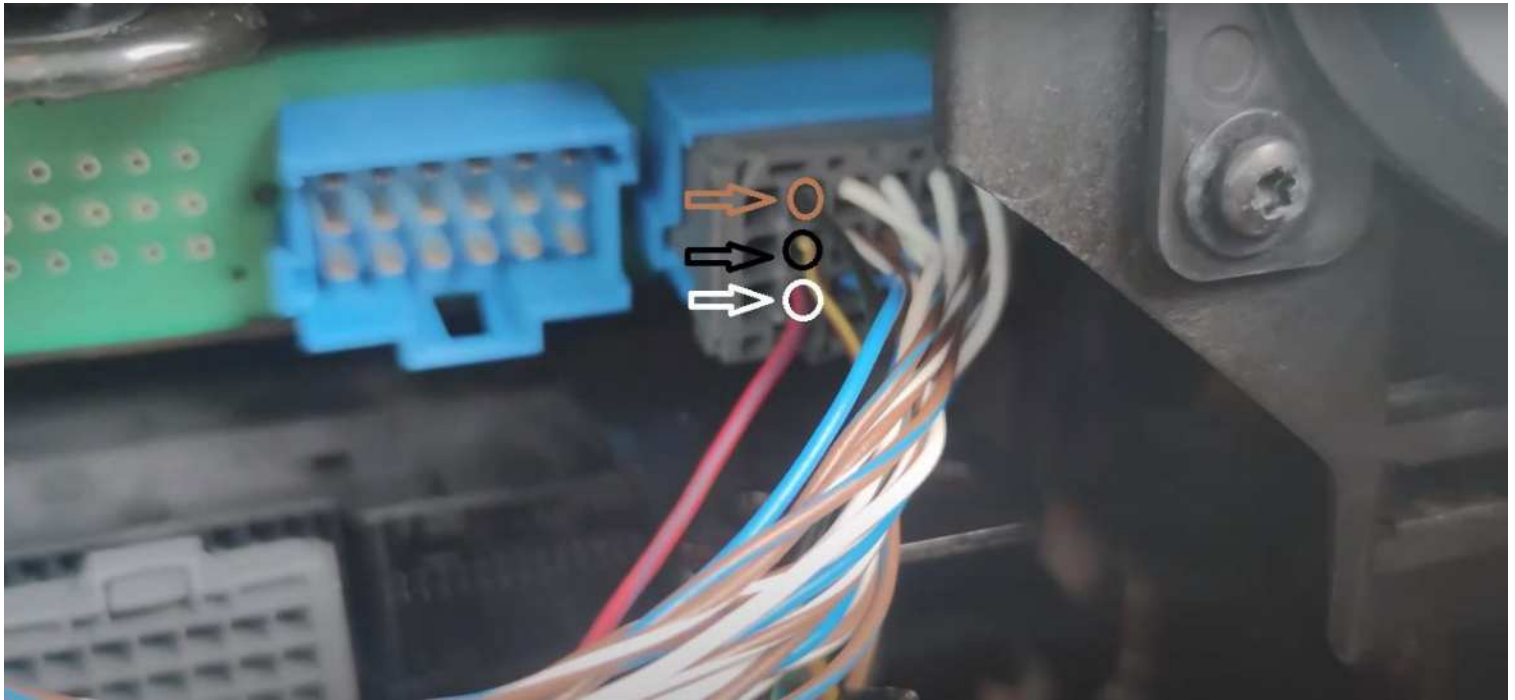
After the procedure, you need to remove DPF and delete Fault. "Mercedes DTC Eraser Euro 6" will help you to clear the fault.

Video link: <https://youtu.be/JKr0rEguGgQ>



You should definitely cancel the DPF after installing the Adblue Removal Emulator!

# Installation Emulator For Mitsubishi Fuso Euro 6



You should definitely cancel the DPF after installing the Adblue Removal Emulator!

# Installation Emulator For Mitsubishi Fuso Euro 6



You should definitely cancel the DPF after installing the Adblue Removal Emulator!