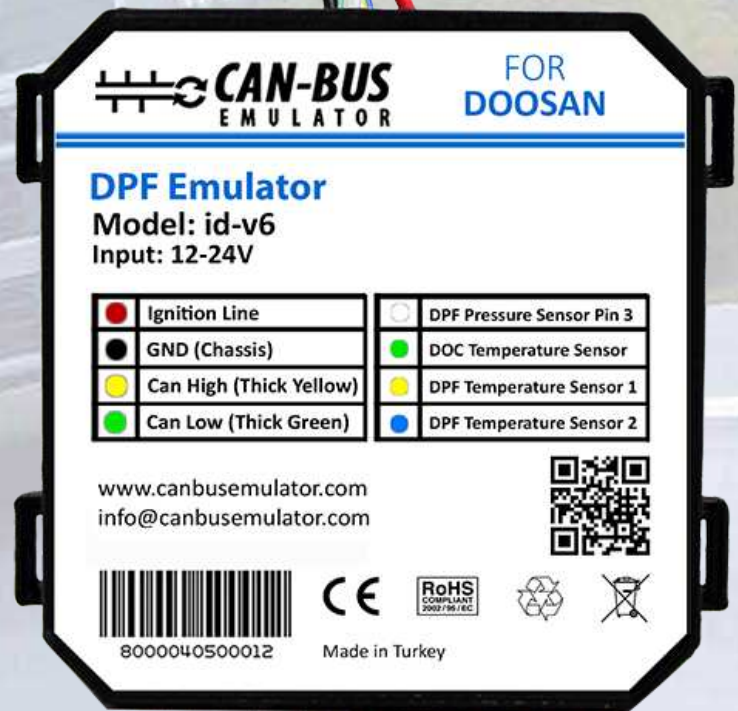





# USER MANUAL

## INSTALLATION OF DOOSAN ADBLUE EMULATOR

**EURO 6**



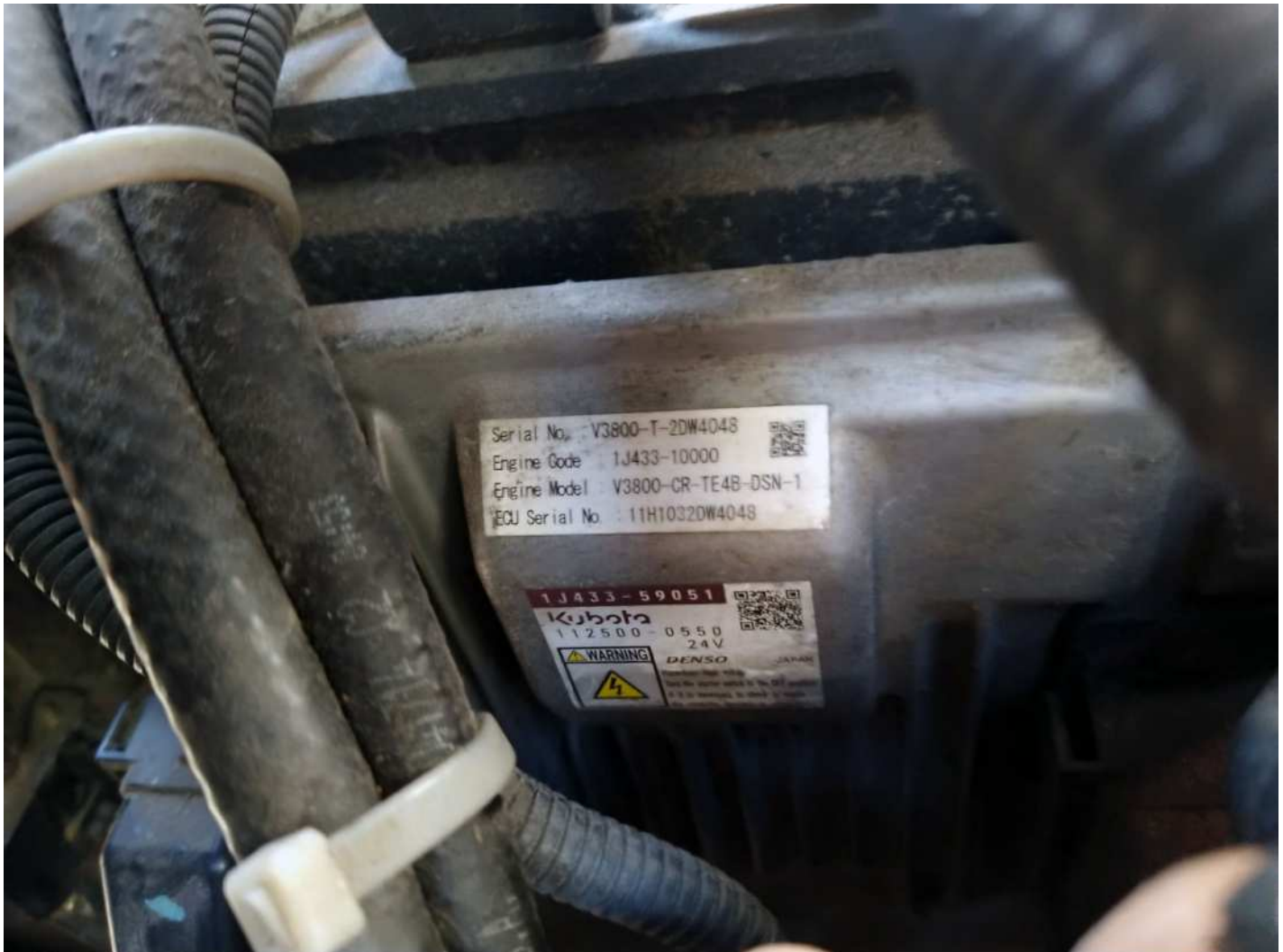
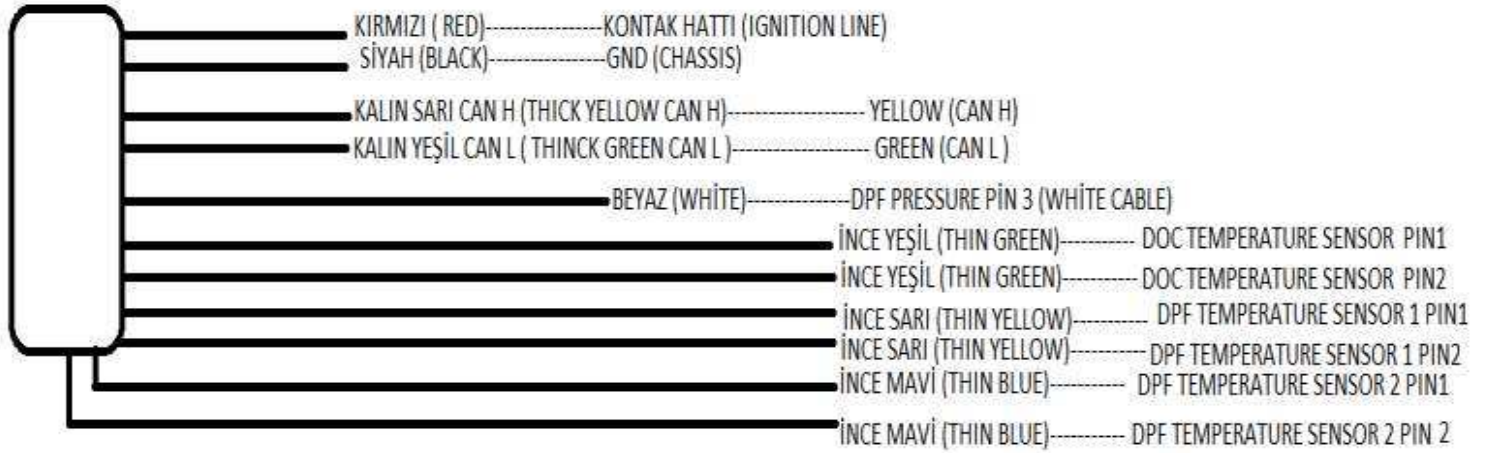
 [www.canbusemulator.com/en](http://www.canbusemulator.com/en)

 +90 530 937 46 36

 [erenakarsubasi](https://t.me/erenakarsubasi)

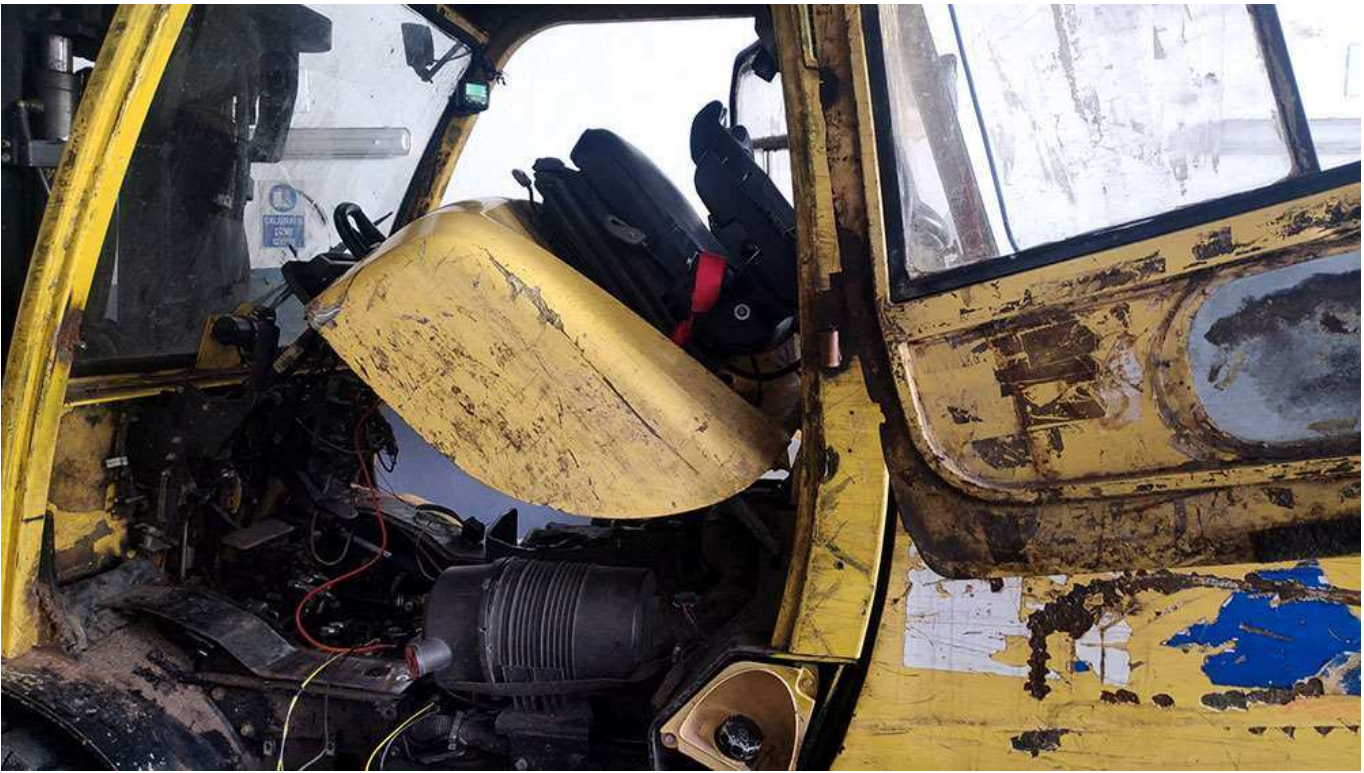
# INSTALLATION OF ADBLUE EMULATOR FOR DOOSAN EURO 6

## DPF emulator





**You can install DPF emulator using the connection diagram above. You can fix the emulator in the appropriate area by using extra cable during the installation.**

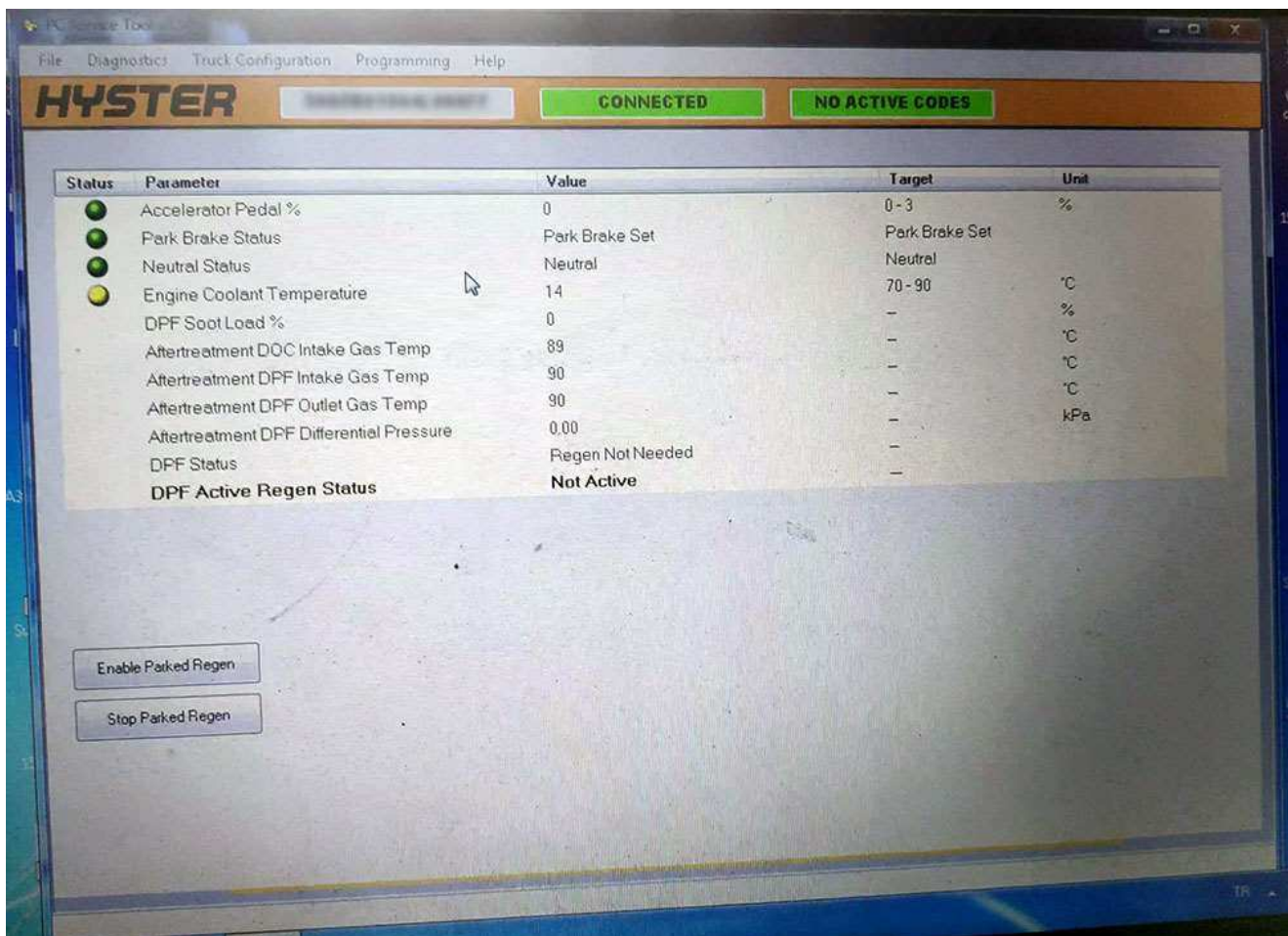


**The Green - Yellow line shown in the picture is the extra cable CAN line.**





**Extra cable is used for temperatures and differential pressure sensor**



**You should pull out the DPF after installing the DPF Emulator!**